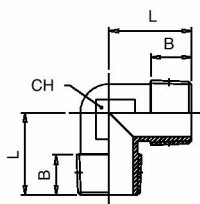


5000

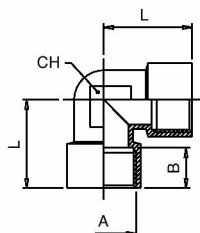
RACOR A L MACHO - MALE ELBOW



Código Code	A	B	L	CH	Conf. Pack.
05000000102NB	1/8	7.5	18	11	50
05000000103NB	1/4	11	24	13	25
05000000104NB	3/8	12	27	17	25
05000000105NB	1/2	14	29.5	20	25
05000000107NT	3/4	14.5	32	27	10
05000000109NT	1"	16.8	39	30	5

5010

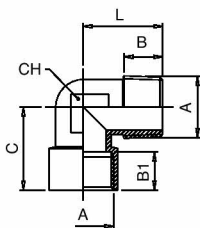
RACOR A L HEMBRA - FEMALE ELBOW



Código Code	A	B	L	CH	Conf. Pack.
05010000102NB	1/8	8.5	21	11	50
05010000103NB	1/4	11	25.5	13	25
05010000104NB	3/8	11.5	28	17	25
05010000105NB	1/2	15	32	20	25
05010000107NT	3/4	16.5	36.5	27	10
05010000109NT	1"	19	45	30	5

5020

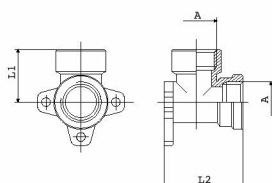
RACOR A L MACHO - HEMBRA - MALE-FEMALE ELBOW



Código Code	A	B	B1	C	L	CH	Conf. Pack.
05020000102NB	1/8	7.5	8.5	21	18	11	50
05020000103NB	1/4	11	11	25.5	24	13	25
05020000104NB	3/8	11.5	12	28	27	17	25
05020000105NB	1/2	14	15	32	29.5	20	25
05020000107NT	3/4	14.5	16.5	36.5	32	27	10
05020000109NT	1"	16	19	45	39	30	5

5050

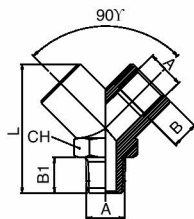
RACOR A L FIJACIÓN 90° CON SOPORTE - FEMALE BRACKET FITTING 90°



Código Code	A	L1	L2	Conf. Pack.
05050000105NB	1/2	27	40.5	10

6000

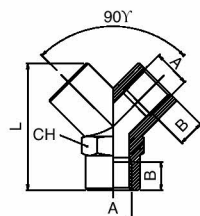
DERIVACIÓN A Y 90° MACHO - MALE Y 90°



Código Code	A	B	B1	L	CH	Conf. Pack.
06000000102NB	1/8	8.5	9	33	14	25
06000000103NB	1/4	11	11	37	17	25
06000000104NB	3/8	11.5	12.5	46	22	20
06000000105NB	1/2	14	16.5	58	26	10

6010

DERIVACIÓN A Y 90° HEMBRA - FEMALE Y 90°



Código Code	A	B	L	CH	Conf. Pack.
06010000102NB	1/8	8.5	33	14	25
06010000103NB	1/4	11	37	17	25
06010000104NB	3/8	11.5	46	22	20
06010000105NB	1/2	14	58	26	10